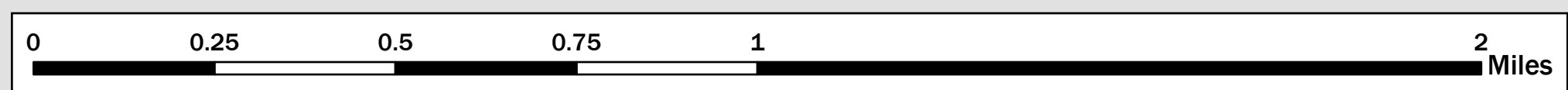
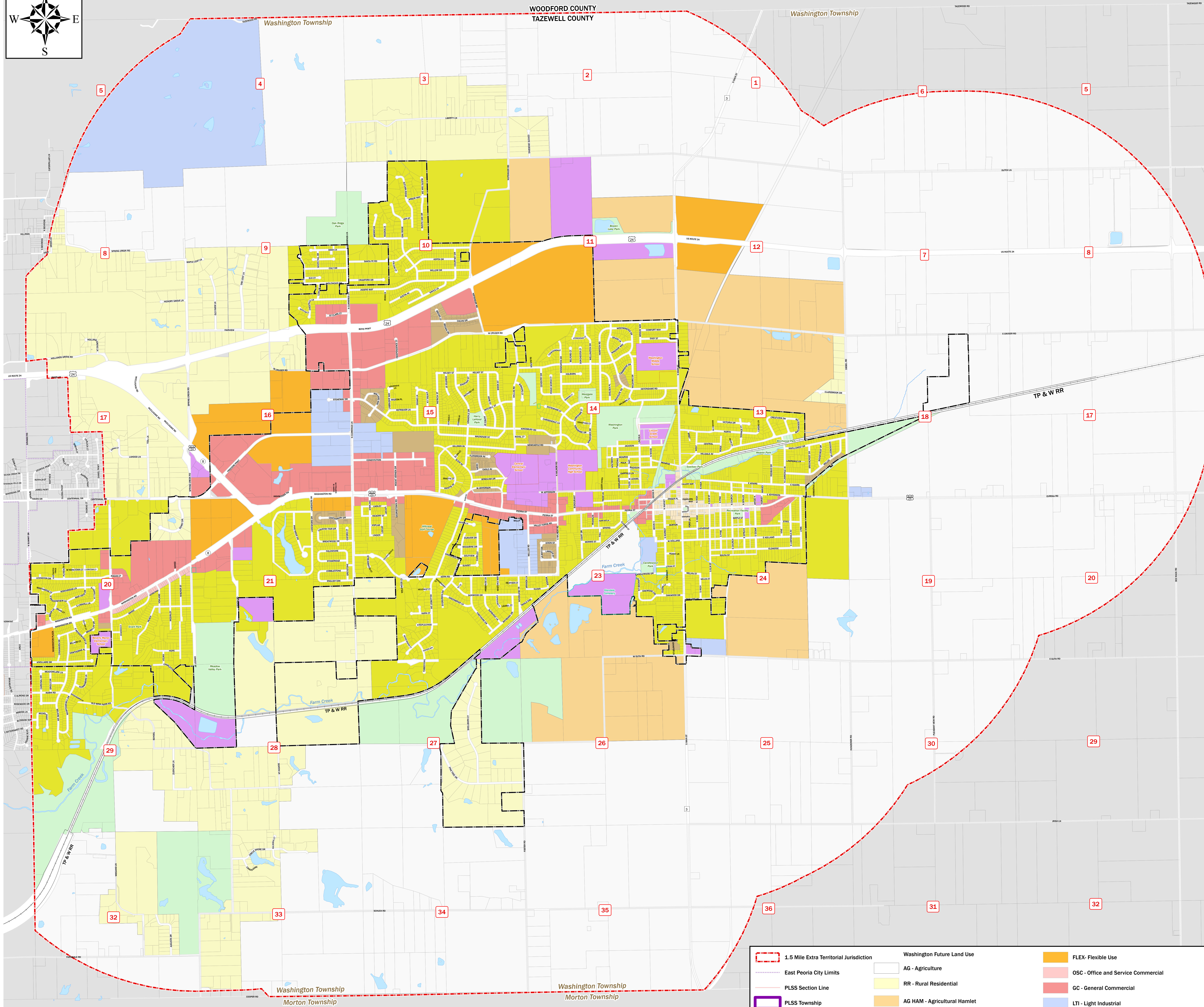


# CITY OF WASHINGTON

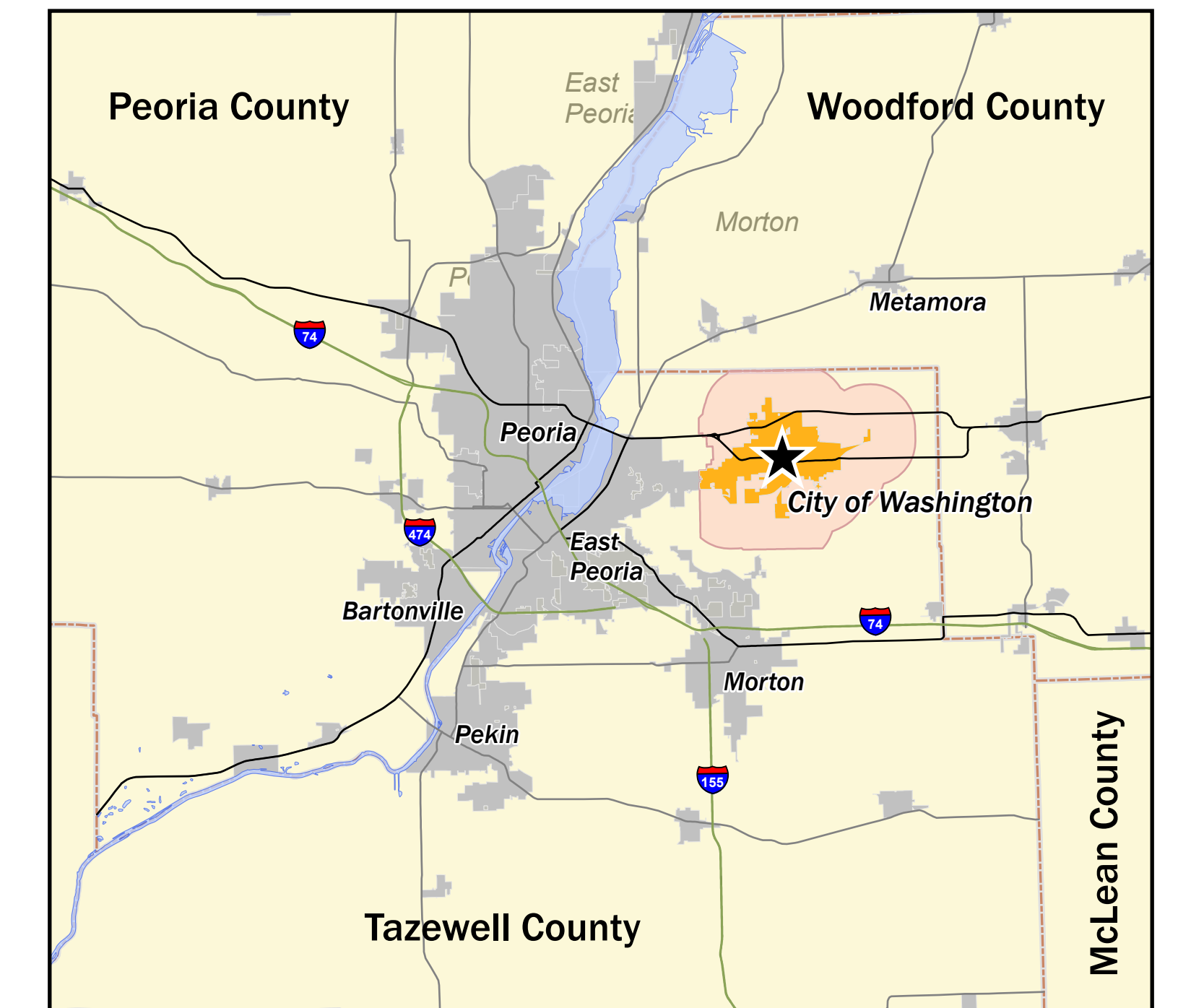
## TAZEWELL COUNTY, ILLINOIS

### COMPREHENSIVE PLAN

#### FUTURE LAND USE MAP



Washington Future Land Use	
	1.5 Mile Extra Territorial Jurisdiction
	East Peoria City Limits
	PLSS Section Line
	PLSS Township
	Water Feature
	Parcels
	AG - Agriculture
	RR - Rural Residential
	AG HAM - Agricultural Hamlet
	STFR - Single and Two Family Residential
	MFR - Multifamily Residential
	MXD - Mixed Use: Downtown Commercial & Residential
	FLEX - Flexible Use
	OSC - Office and Service Commercial
	GC - General Commercial
	LTI - Light Industrial
	HVI - Heavy Industrial
	PBI - Public Institutional
	PKOS - Parks and Open Space



*Map is provided for use as a planning tool & data is provided 'as is' without warranty or any representation of accuracy, timeliness, or completeness. Newly constructed streets or recently annexed areas may not be shown.*