



2328 E. Lincoln Hwy., #360, New Lenox, IL 60451
Phone: 708-448-9540 • Fax 708-448-9594

HOT IN-PLACE ASPHALT RECYCLING

performed by

AMERICAN ASPHALT SURFACE RECYCLING, INC.

What is it?

Hot In-Place Asphalt Recycling, simply stated, is a cost effective process that involves the restoration of existing asphalt surfaces in preparation for a thin overlay. The pavement is heated to soften the existing roadway followed by multiple rows of scarifying teeth that are pulled through the softened material. The deep scarification will effectively remix the old material, interrupt the cracks and provide preliminary leveling. If needed, an asphalt modifier is added to re-introduce chemical components to the aged asphalt that were lost to oxidation and thereby restart the aging process. Additional leveling and redistribution of the mixed material, performed by an attached paving screed, will re-establish the original profile of the street allowing for proper drainage to occur. The material is immediately compacted and can be opened to all traffic.

What will you see?

Up to two days prior to operations beginning, residents will be notified by handout, either posted or delivered, of the approximate day and time when the work will be performed in their neighborhood. Leaving the streets free of parked vehicles during the time would be greatly appreciated and will lessen the amount of time individuals are inconvenienced by the operations. The only time homeowners will not be able to enter or leave their homes is the ten minutes (or so) that the machines are directly in front of the driveway. During this operation, residents may witness steam from the heated asphalt. This steam is of no concern and typical of the process. Some residents may choose to keep all windows closed until the machinery has passed.

After the operations are complete, residents may notice a browning of trees and shrubs that occurs because of the extreme heat needed to soften the pavement. Having conducted extensive studies we learned this is only a temporary effect causing no long term harm to the foliage.

Any questions or concerns about the operations, equipment or effects of the process can be answered by contacting:

Cheryl Jager, President
American Asphalt Surface Recycling, Inc.
708-448-9540 or
AASR@air-wans.com
(24 hours, 7 days per week)

This is step 2 of 4 for improving your roadway. After this process is completed, the next process will start in approximately 2 - 6 weeks.

Street Maintenance Map

NORTH CUMMINGS

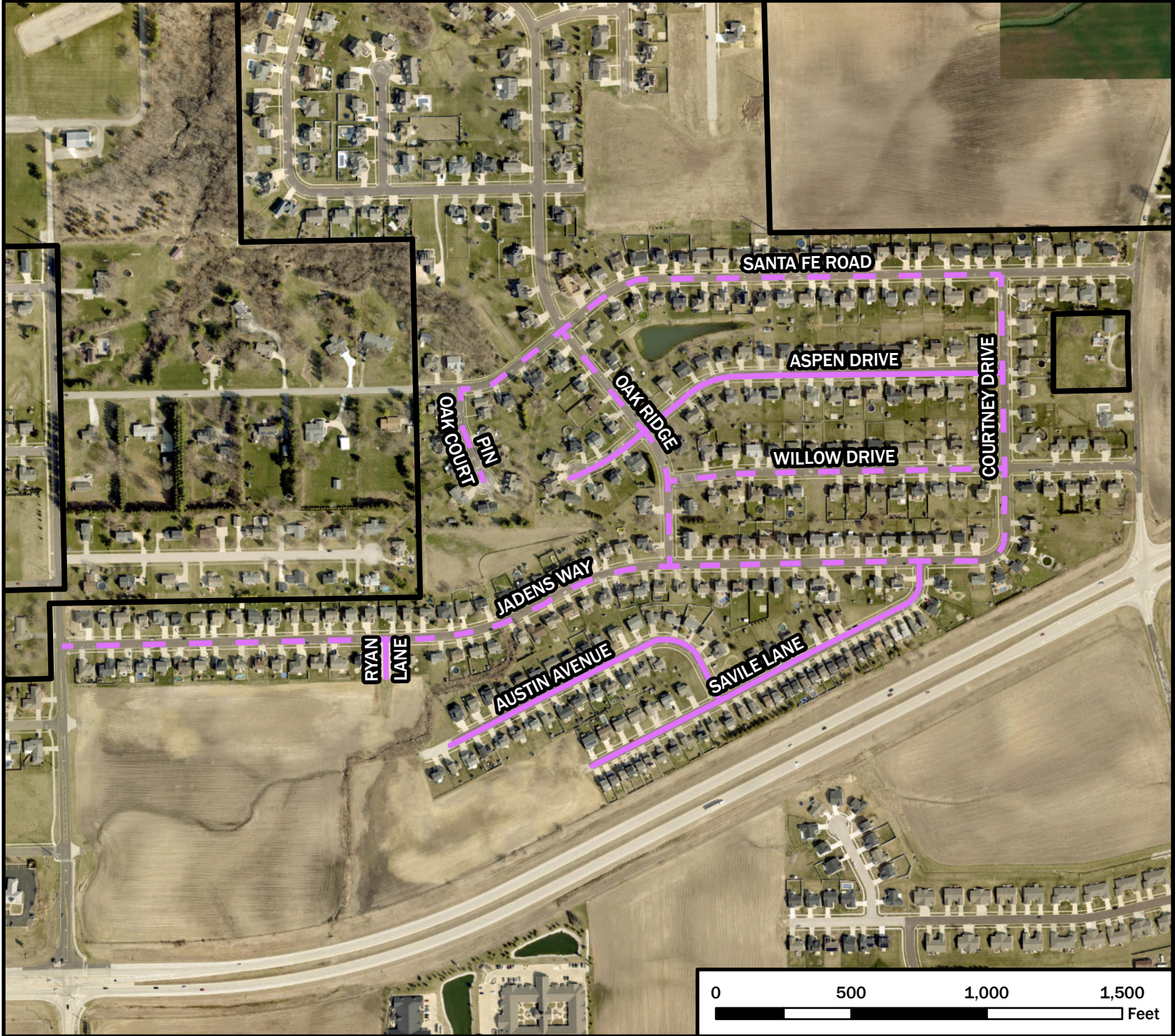
Legend

- Chip Seal 2024
- Chip Seal - HIR 2024
- City Boundary



Date: 3/14/2024

This map indicates approximate data locations and may not be 100% accurate.



Street Maintenance Map

East of N. Main St

Legend

- Chip Seal 2024
- Chip Seal - HIR 2024
- City Boundary



Date: 3/14/2024

This map indicates approximate data locations and may not be 100% accurate.

