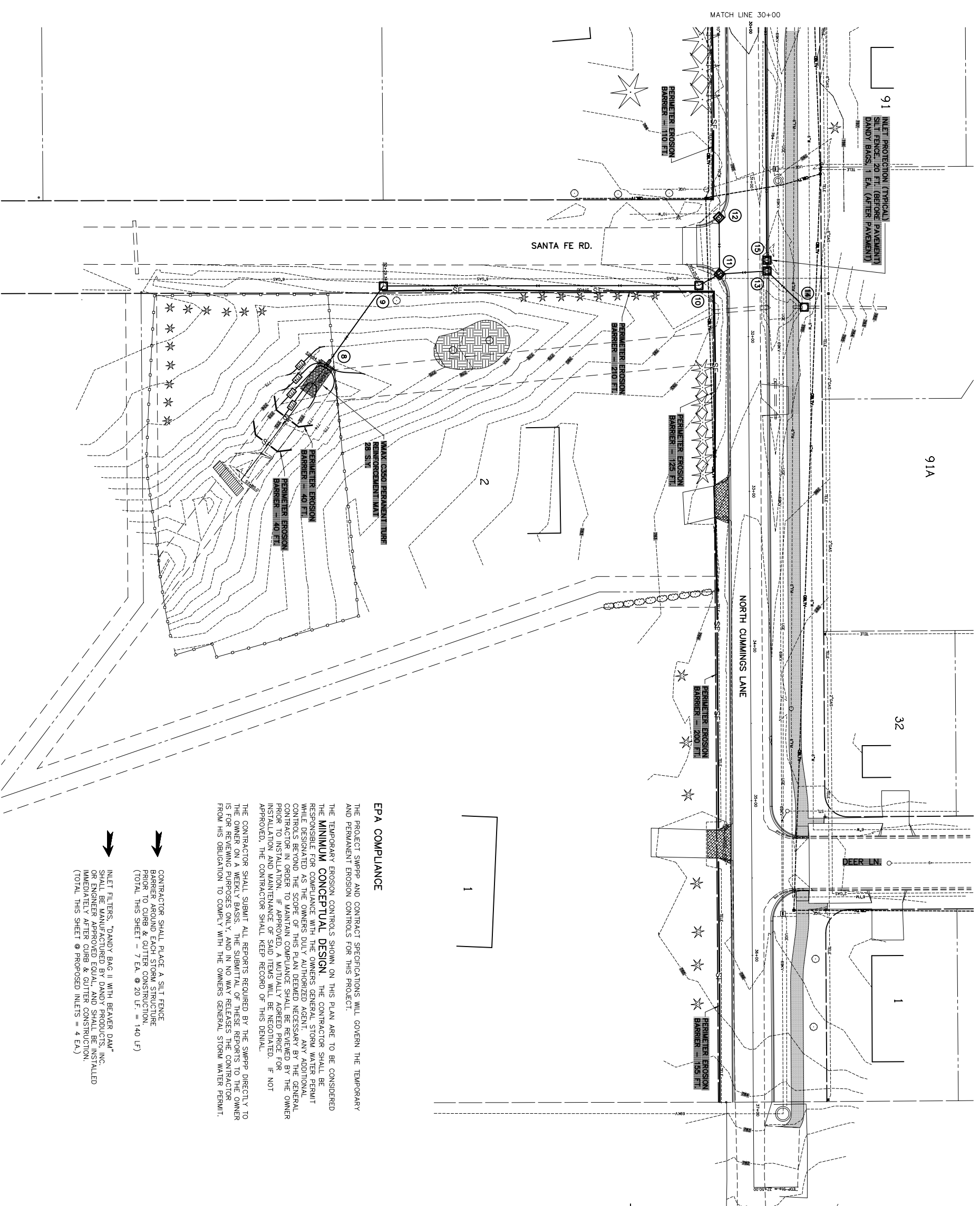


91A



1" = 30'

LEGEND

- INLET PROTECTION
- MAX C350 PERMANENT TURF REINFORCEMENT MAT
- PERIMETER EROSION BARRIER
- TEMPORARY EROSION CONTROL SEEDING AND EROSION CONTROL BLANKET

EROSION CONTROL QUANTITIES (THIS SHEET ONLY)

PERIMETER EROSION BARRIER	(FEET)
N. CUMMINGS LN.	
RT STA. 30+00 TO RT. STA. 31+10	110
RT STA. 31+70 TO RT. STA. 32+95	125
RT STA. 33+20 TO RT. STA. 35+20	200
RT STA. 35+40 TO RT. STA. 36+95	155
SANTA FE RD.	
LT STA. 50+20 TO LT. STA. 52+30	210
20' RT. STA. 53+36 TO 40' LT. STA. 53+35	40
20' RT. STA. 53+55 TO 20' LT. STA. 53+55	40
TOTAL (THIS SHEET ONLY)	880 FT.

INLET PROTECTION

LOCATION	SILT FENCE (FEET)	INLET FILTER, DANDY BAG II W/ BEAVER DAM (EACH)
N. CUMMINGS LN.		
18.41' RT. STA. 31+22.87 (STRUCTURE #12)	20	1
18.37' RT. STA. 31+59.43 (STRUCTURE #11)	20	1
12.33' LT. STA. 31+57.62 (STRUCTURE #13)	20	1
36.28' LT. STA. 31+81.13 (STRUCTURE #14)	20	0
12.33' LT. STA. 31+50.62 (STRUCTURE #15)	20	1
SANTA FE RD.		
CENTERLINE STA. 52+29.34 (STRUCTURE #9)	20	0
CENTERLINE STA. 50+25.27 (STRUCTURE #10)	20	0
TOTAL (THIS SHEET ONLY)	140 FT.	4 EA.

MAX C350 PERMANENT TURF REINFORCEMENT MAT

LOCATION	(SQ. YD.)
SANTA FE RD.	
STA. 52+95 TO STA. 53+20	28
TOTAL (THIS SHEET ONLY)	28 S.Y.

EPA COMPLIANCE

THE PROJECT SWPPP AND CONTRACT SPECIFICATIONS WILL GOVERN THE TEMPORARY AND PERMANENT EROSION CONTROLS FOR THIS PROJECT.

THE TEMPORARY EROSION CONTROLS SHOWN ON THIS PLAN ARE TO BE CONSIDERED THE **MINIMUM CONCEPTUAL DESIGN**. THE CONTRACTOR SHALL BE RESPONSIBLE FOR COMPLIANCE WITH THE OWNERS GENERAL STORM WATER PERMIT WHILE DESIGNATED AS THE OWNERS DUTY AUTHORIZED AGENT. ANY ADDITIONAL CONTROLS BEYOND THE SCOPE OF THIS PLAN DENIED NECESSARY BY THE GENERAL CONTRACTOR IN ORDER TO MAINTAIN COMPLIANCE SHALL BE REVIEWED BY THE OWNER PRIOR TO INSTALLATION. IF APPROVED, A MUTUALLY AGREED PRICE FOR INSTALLATION AND MAINTENANCE OF SAID ITEMS WILL BE NEGOTIATED. IF NOT APPROVED, THE CONTRACTOR SHALL KEEP RECORD OF THIS DENIAL.

THE CONTRACTOR SHALL SUBMIT ALL REPORTS REQUIRED BY THE SWPPP DIRECTLY TO THE OWNER ON A WEEKLY BASIS. THE SUBMITTAL OF THESE REPORTS TO THE OWNER IS FOR REVIEWING PURPOSES ONLY, AND IN NO WAY RELEASES THE CONTRACTOR FROM HIS OBLIGATION TO COMPLY WITH THE OWNERS GENERAL STORM WATER PERMIT.

- CONTRACTOR SHALL PLACE A SILT FENCE PRIOR TO CURB & GUTTER CONSTRUCTION (TOTAL THIS SHEET = 7 EA. @ 20 LF. = 140 LF)
- INLET FILTERS, "DANDY BAG II WITH BEAVER DAM" SHALL BE MANUFACTURED BY DANDY PRODUCTS, INC. OR ENGINEER APPROVED EQUAL, AND SHALL BE INSTALLED IMMEDIATELY AFTER CURB & GUTTER CONSTRUCTION. (TOTAL THIS SHEET @ PROPOSED INLETS = 4 EA.)

EROSION CONTROL PLAN
NORTH CUMMINGS LANE RECONSTRUCTION

FOR: CITY OF WASHINGTON

DATE: 1/02/09

SCALE: 1" = 30'

AUSTIN ENGINEERING CO., INC.
CIVIL ENGINEERS
LICENSE NO. 184-001148

PROJECT NO. 20-07-004

ISSUED: 1/02/09

SHEET NO. 13 OF 35